



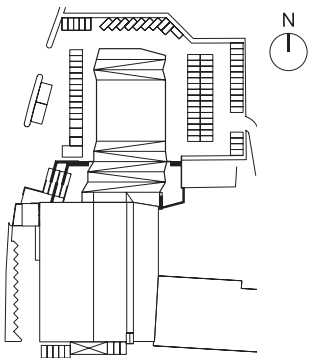
SWISSPEARL ARCHITECTURE 18

International Edition - High Profile Buildings



Sports Hall Kibæk Krydsfelt, Kibæk, Denmark

Trompe l'œil



Following a renovation and extension, the existing sports hall in the Danish provincial town of Kibæk has been turned into a hub for the entire community. The envelope design, marked by an assembly of folded planes and ubiquitous triangular openings, distinguishes the extension from the original structure and advertises the public aspirations of the new centre.

Providing space for concerts and group gatherings, the sports centre on the edge of Kibæk, has evolved into a meeting place for the local community. However, in its original form, the centre struggled to fully realise its potential: the spatial capacity was insufficient to accommodate all sports-related activities, while the strictly functional layout, based on a rectangular gym enclosed by a number of separate auxiliary rooms, held little appeal for a wider public.



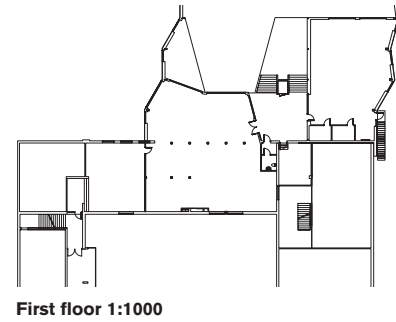
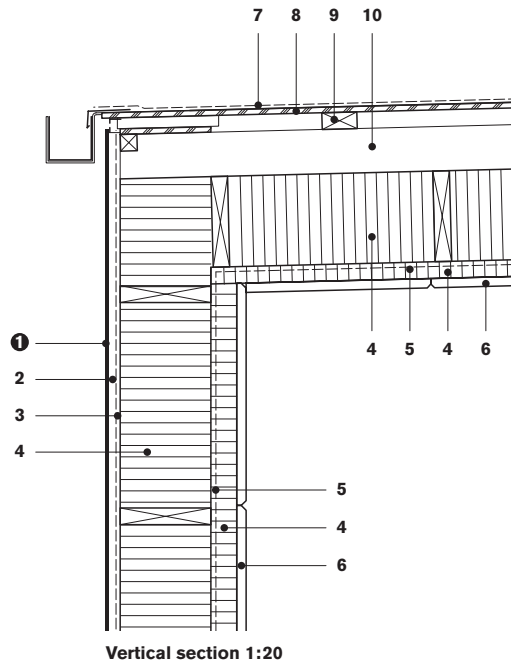
**“THE INTENTION WAS TO OPEN THE CENTRE TOWARDS THE SURROUNDINGS, MAKING IT A LIVING PART OF THE TOWNSCAPE.”
PRO ARKITEKTER/THORUP GRUPPEN**

Consequently, the task for the designers involved an adaptation and extension of the existing structure, as well as the provision of additional facilities to strengthen the centre’s communal role. Architects Pro Arkitekter, in collaboration with Thorup Gruppen, converted the cafeteria into an entrance lobby that features a triangular ‘totem pole’ with built-in monitors, which serves as the central node, connecting the original part with the new extension to the north.

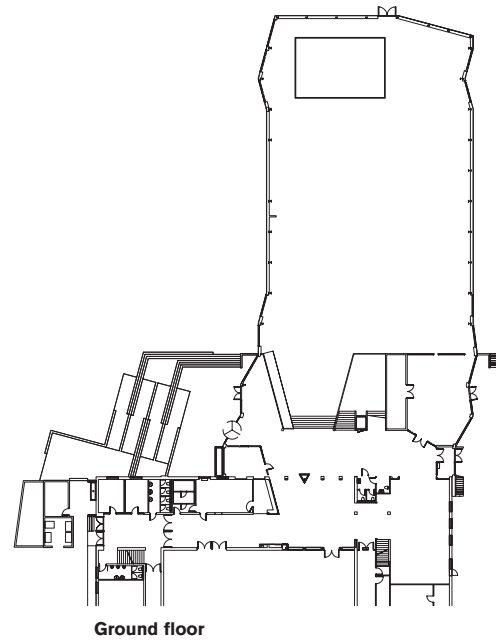
The existing sports hall has been re-roofed and fitted with internal windows to establish a visual connection with the adjacent rooms. The new extension comprises an open and flexible sports hall as well as an assembly room for small group activities on the ground floor, a fitness centre above, and a lounge overlooking the hall on the landing in-between. The architects used the slope of the

terrain to embed the new hall in the ground, keeping the building height low and creating a split-level arrangement that allows a great degree of transparency throughout the entire facility.

The same sense of transparency pervades the relationship between the internal and external spaces; the main hall opens onto its surroundings via large glazed folding doors, facilitating a combined use of the indoor and outdoor areas. The contrast between the uniform sand-coloured Swisspearl panelling and the large triangular façade openings adds considerable visual depth to the façade, creating a *trompe l’œil* effect in tune with the faceted envelope. *Patrick Zamariàn*



- 1 Swisspearl® cement composite panel 8 mm
- 2 ventilation cavity, wooden batten
- 3 moisture barrier, cement chipboard
- 4 thermal insulation
- 5 vapour barrier
- 6 timber fibre board
- 7 waterproofing
- 8 plywood, moisture-resistant
- 9 wooden batten
- 10 ventilation cavity





“IN ORDER TO MINIMISE OPERATION AND MAINTENANCE COSTS, THE BUILDING IS COVERED WITH YELLOWISH SAND-COLOURED SWISSPEARL PANELS.”
PRO ARKITEKTER/THORUP GRUPPEN

Location Velhustedvej 12, Kibæk, Denmark

Client Kibæk Krydsfelt, Kibæk

Architects Pro Arkitekter, Højbjerg, Denmark; Per Mikkelsen, in cooperation with Thorup Gruppen, Tårn, Denmark; Paul Lange

Building period 2010–2011

Façade construction René Lauritsen, Sønder Omme, Denmark

Façade material SWISSPEARL® CARAT, Amber 7082